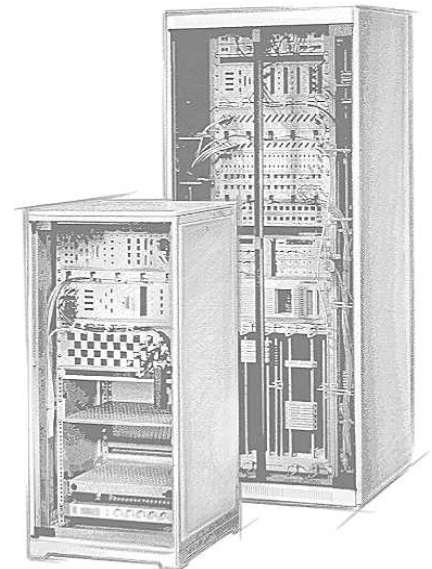


## Test Report No. TL200529166

<b>Prüfgegenstand</b> Test Item	<b>AMC – Module with handle and latch mechanism</b>
<b>Identifikation</b> Identification	<b>Art. No.: 20849-040 // Art. No.: 20849-041 // Art. No.: 20849-042</b>
<b>Prüfauftrag</b> Test Order	<b>200x insertion / extraction cycles with full latch engagement through all three detent positions</b>
<b>Prüfspezifikation</b> Test Specification	<b>Assessment of latch mechanism operation</b>
<b>Auftraggeber</b> Test requested by	<b>Michael Joist / R&amp;D</b>
<b>Verfasser</b> Reported by	<b>Thorsten Lehm</b>
<b>Datum</b> Date	<b>25.08.2005</b>
<b>Unterschrift</b> Signature	

**Testlabor**  
Schroff GmbH  
Postfach 3  
D-75334 Straubenhardt

**Thorsten Lehm**  
Telefon: (07082) 794-918  
Telefax: (07082) 794-446  
Email: [thorsten\\_lehm@schroff.de](mailto:thorsten_lehm@schroff.de)



This report consists of 7 numbered pages. The examination results are only related to the equipment under test. This material is proprietary of Schroff GmbH. Any unauthorized reproduction, use or disclosure of this material, or any part thereof, is strictly prohibited. This material is meant solely for the use by Schroff employees and authorized Schroff customers.

<b>Zusatzangaben</b> Additional Information	-----
<b>Anlieferungszustand</b> State upon Delivery	<b>Assembled, fully functional</b>
<b>Prüfmenge</b> Quantity	<b>3x from each article no.</b>
<b>Verbleib/Verwendung</b> To be retained/Use	<b>Requestor</b>
<b>Bezug</b> (LS-Nr./QSB-Nr./Erstbericht etc.) Reference	-----

## 1 Zusammenfassung/Beurteilung Summary/Assessment

*See individual details under results and photo documentation below.*

## 2 Versuchsbeschreibung Description of test

-----

## 2.1 Prüfling(e) Sample(s)

Trial A = Module Nr.: 20849-040 / SW HH

Trial B = Module Nr.: 20849-041 / SW FH

Trial C = Module Nr.: 20849-042 / DW HH

3x of each unit tested per trial

## 2.2 Versuchsparameter / Versuchsaufbau / Versuchsdurchführung Test parameters/Test set-up/Test performed

200 latch activation cycles.

200x module insertion / extraction cycles.

The handle was in the 1st or 3rd engagement position during insertion / extraction respectively.

Observation of free movement of the moving slider including friction.

Additional assessment of the ease of operation of the latch mechanism and handle. The latch mechanism has been lubricated with TEFLON spray before commencement of testing.

Prepare photo-documentation of the tested components.

## 2.3 Prüfmittel / Meßgeräte Test resources/equipment

-----

### 3 Ergebnisse Results

#### **Trial A = Module Nr.: 20849-040 (3 units) :**

##### 1. Unit trial =

- No damage observable after 200 handle activations
- Handle is not as easy to operate as prior to the beginning of the 200 activations

##### 2. Unit trial =

- After 200 activations, the latch spring popped out of its attachment point and was deformed
- Handle is not as easy to operate as prior to the beginning of the 200 activations

##### 3. Unit trial =

The latch mechanism was sprayed with additional TEFLON and allowed to dry before beginning the test.

- No damage observable after 200 handle activations
- Handle continues to operate well

#### **Trial B = Module Nr.: 20849-041 (3 units) :**

##### 1. Unit trial =

- No damage observable after 200 handle activations
- Handle operates relatively well after 200 activations

##### 2. Unit trial =

- No damage observable after 200 handle activations
- Handle operates relatively well after 200 activations

##### 3. Unit trial =

The latch mechanism was sprayed with additional TEFLON and allowed to dry before beginning the test.

- No damage observable after 200 handle activations
- Handle continues to operate well

**Trial C = Module Nr.: 20849-042 (3 units) :****1. Unit trial =**

- No damage observable after 200 handle activations
- Handle operates relatively well after 200 activations

**2. Unit trial =**

- No damage observable after 200 handle activations
- Handle operates relatively well after 200 activations

**3. Unit trial =**

The latch mechanism was sprayed with additional TEFLON and allowed to dry before beginning the test.

- No damage observable after 200 handle activations
- Handle continues to operate well

**4 Bemerkungen**  
**Remarks**

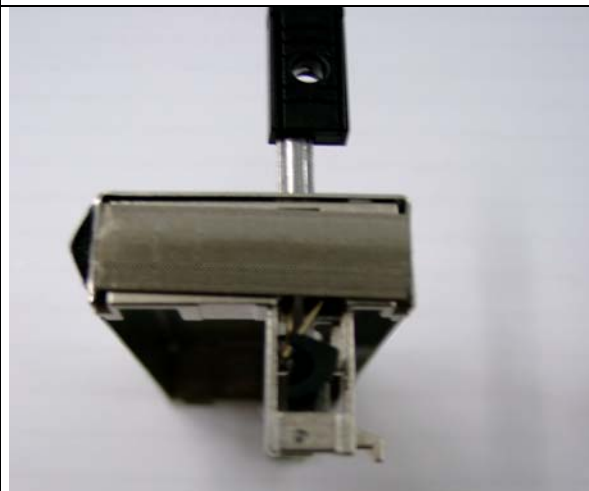
-----

**5 Anlage(n)**  
Enclosures.

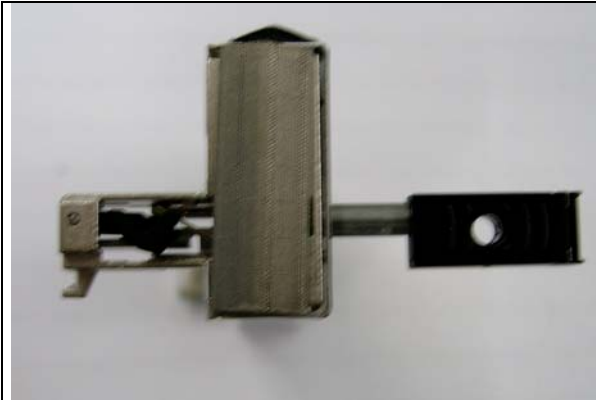
**Photo-dokumentation =**



**Photo 1=**  
Detail view of a module with handle.



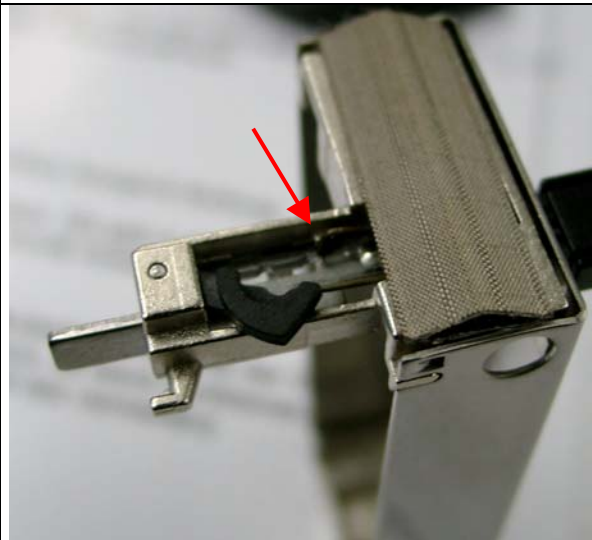
**Photo 2=**  
Detail view of the latch mechanism and handle.



**Photo 3=**  
Handle in activation position 1.



**Photo 4=**  
Handle in activation position 3.



**Bild 5=**  
Deformed latch mechanism spring.