

THIS DOCUMENT CONTAINS PROPRIETARY INFORMATION WHICH MAY NOT BE DISCLOSED TO OTHERS, REPRODUCED OR USED WITHOUT AUTHORITY FROM THE PROPRIETOR

REVISION HISTORY				
REV	DESCRIPTION	INC BY	DATE	APPROVED
A	-- EDR	--	--	SPG

NOTES: UNLESS OTHERWISE SPECIFIED.

1. APPLICABLE STANDARD / SPECIFICATIONS:

ALL PROCESSING / MATERIALS MUST COMPLY WITH 2002/95/EC RoHS.
 ASME Y14.5-1994, DIMENSION AND TOLERANCES
 ASME Y14.38, ANSI Y14.38M, ABBREVIATIONS
 MIL-HDBK-454, GUIDELINE 9, WORKMANSHIP
 PENTAIR SOP 0490.2.4A, SURFACE FINISH CLASS
 ALL SURFACES CLASS "B"

2. ALL DIMENSIONS SHOWN ARE FOR FABRICATION, ASSY, AND VERIFICATION ONLY. GEOMETRY IS CONTROLLED AND MAINTAINED BY CAD FILE.

3. REMOVE ALL BURRS AND SHARP EDGES.

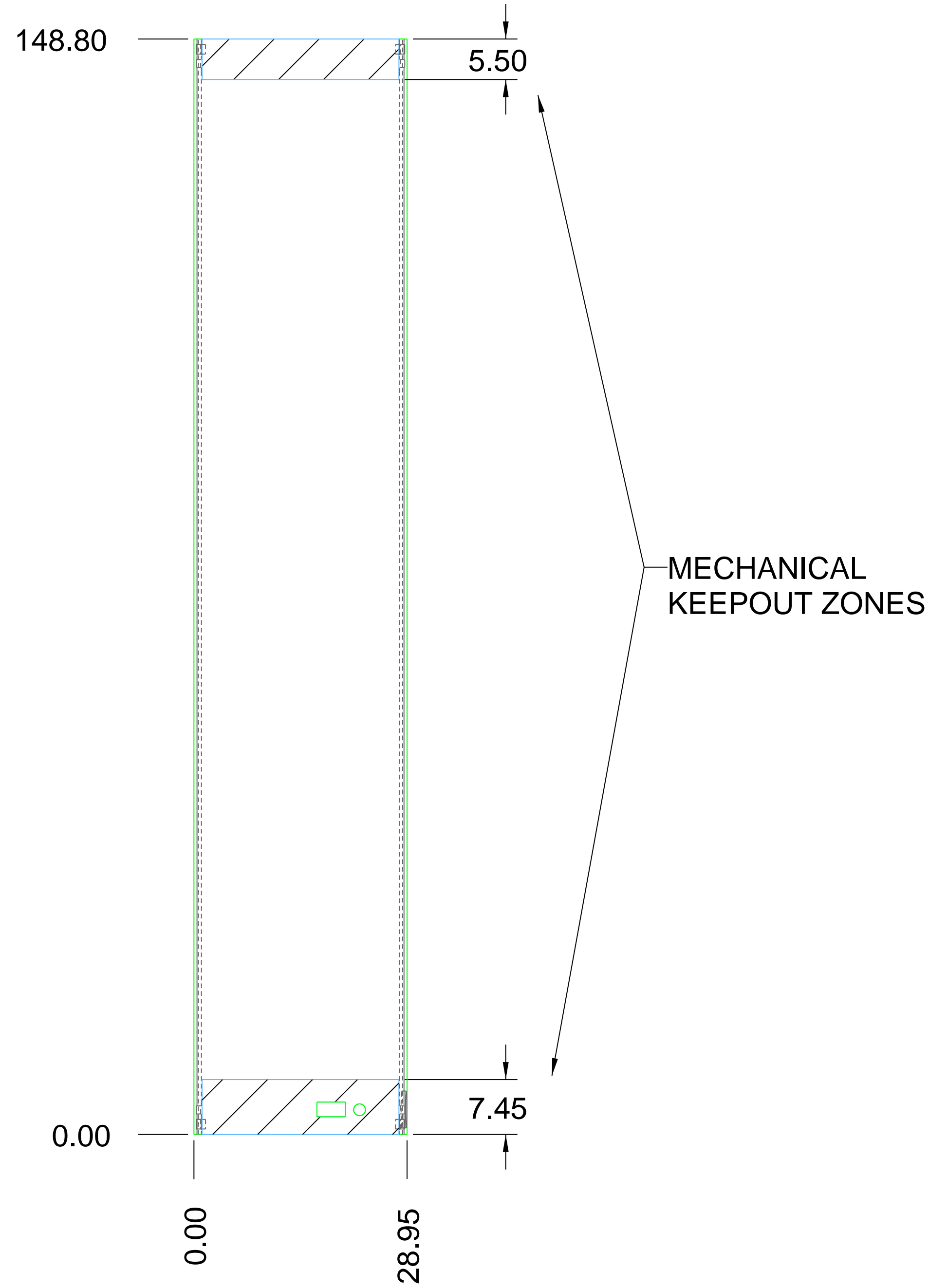
4 MATERIAL:
 0.60 mm STAINLESS STEEL

5 FINISH:
 PASSIVATE PER ASTM A967-01

6. BENDS - N/A

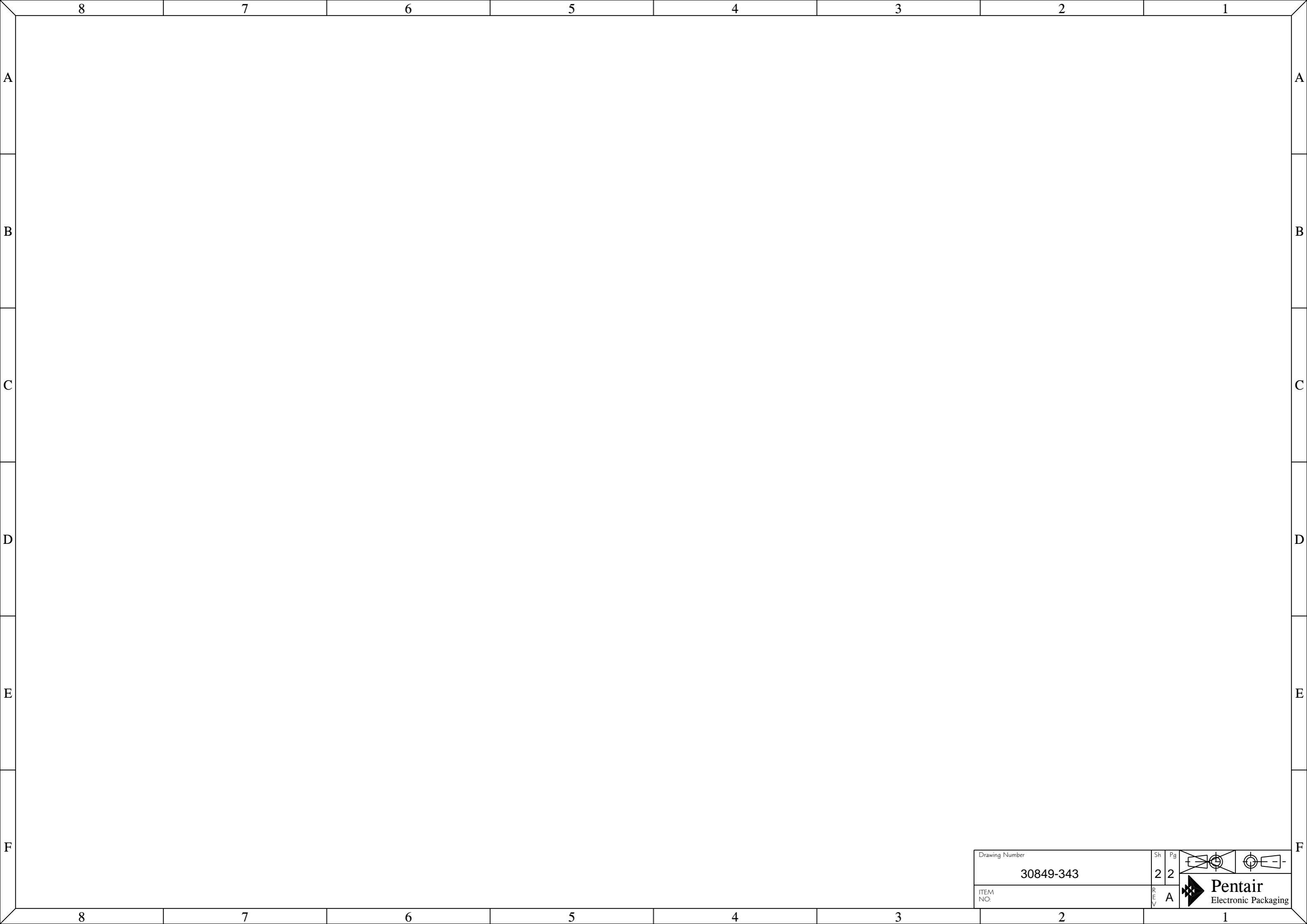
7. MASK - N/A

8. SILKSCREEN - N/A



DEFAULT TOLERANCES (UNLESS OTHERWISE SPECIFIED)					ALL DIMENSIONS mm[INCH]		COSMETIC APPEARANCE MAX CLASS		APPROVALS		DATE							
DIMENSION SIZE = Xmm	0	0.0	0.00	0.000	THIRD ANGLE PROJECTION			A / B	DESIGNED BY:	--	--	 ...a brand of						
0.0 < X ≤ 10	±1	±0.4	±0.20	±0.100	DRAWN BY:	--			--	TITLE								
10 < X ≤ 100	±2	±0.5	±0.40	±0.200	CHECKED BY:	SPG			--	AMC FRONT PANEL FULL SIZE DOUBLE								
100 < X ≤ 600	±4	±0.7	±0.50	±0.300	RESPONSIBLE ENG:	--			--	PROJECT/CUSTOMER:								
600 < X	±5	±1.0	±0.70	±0.400	WARWICK	MATERIAL			FINISH	AMC : --								
					DESIGN AUTHORITY		MIN CLASS		FILE NAME	30849-146WEB	SCALE	1,000	WEIGHT:	N/A	DWG NO.	30849-146WEB	REV	A

CUSTOMER PART NO.	REV
--	--



Drawing Number		Sh	Pg	
30849-343		2	2	
ITEM NO.		REV	A	