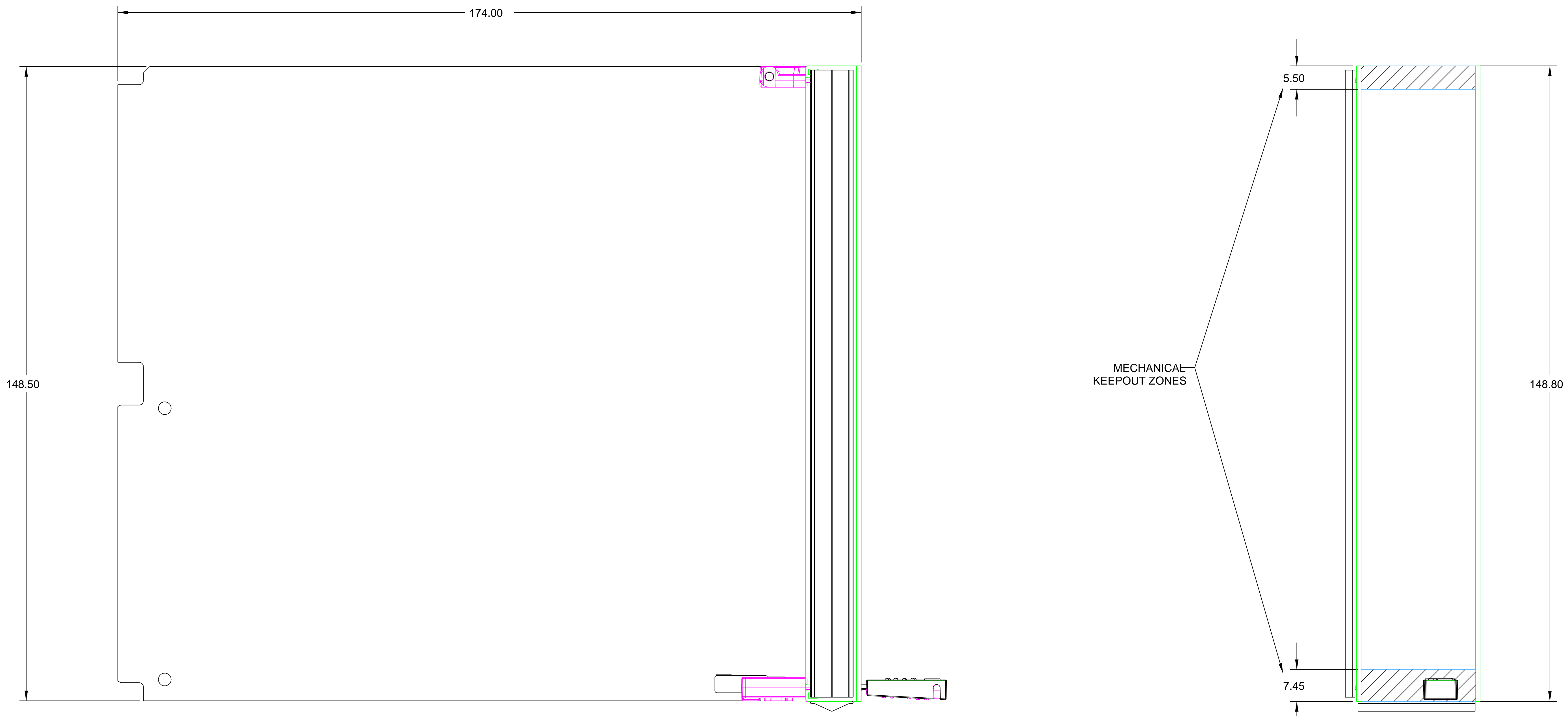
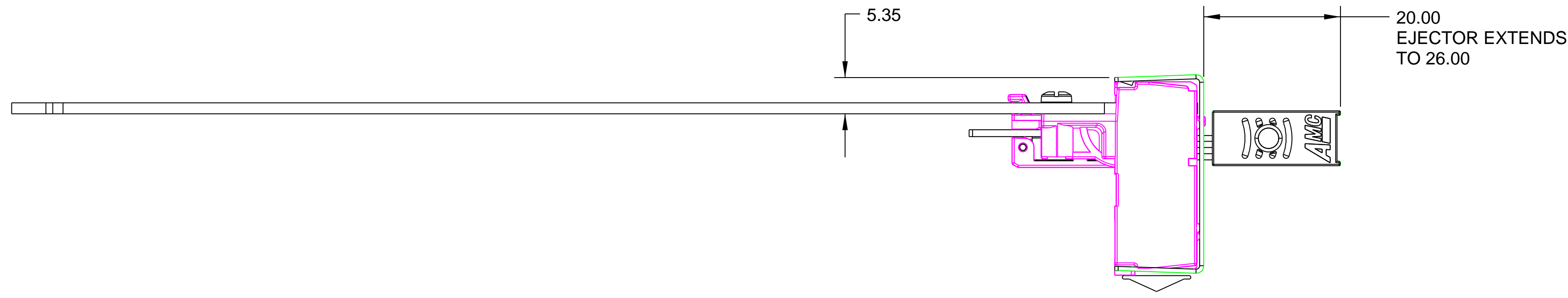


DWG NO	20849-025	REV	SH	1 OF 2
THIS DOCUMENT CONTAINS PROPRIETARY INFORMATION WHICH MAY NOT BE DISCLOSED TO OTHERS, REPRODUCED OR USED WITHOUT AUTHORITY FROM THE PROPRIETOR.				
REVISION HISTORY				
REV	DESCRIPTION	INC BY	DATE	APPROVED
A	--- EDR		---	



P/N 20849-025 FURNISHED AS A KIT
FILLER PCB INCLUDED

TOLERANCE (UNLESS OTHERWISE SPECIFIED)			
mm	HOLES	[INCH]	HOLES
	0.00 +.08		0.000 +.003
DECIMALS	3.19 -.03	DECIMALS	.124 -.001
	3.20 +.10		.125 +.004
X	±0.5	X.XX	±0.02
X.X	±0.2	X.XXX	±0.010
X.XX	±0.10		
	6.39 -.03		.250 -.001
	6.40 +.13		.251 +.005
	12.69 -.05		.500 -.002
ANGULAR	12.70 +.15	ANGULAR	.501 +.006
	19.09 -.05		.750 -.002
	19.10 +.20		.751 +.008
	25.39 -.08		1.000 -.003
	25.40 +.25		1.001 +.010
	OVER -.10		OVER -.004

ALL DIMENSIONS	COSMETIC APPEARANCE
mm[INCH]	MAX CLASS
THIRD ANGLE PROJECTION	A B
	MIN CLASS
DESIGN AUTHORITY	MATERIAL FINISH
WARWICK	4 5

APPROVALS	DATE
DESIGNED BY:	03/06/06
DRAWN BY:	03/06/06
CHECKED BY:	03/06/06
RESPONSIBLE ENG:	03/06/06
PROJECT/CUSTOMER:	
FILE NAME	20849-025

Schroff® *...a brand of* **Pentair** Electronic Packaging

TITLE: **KIT AMC MODULE FULL SIZE DOUBLE FILLER PANEL**

SIZE	CAGE CODE	DWG NO.	REV
D62559		20849-025	
SCALE	2.000	WEIGHT: N/A	1 OF 2

DO NOT SCALE DRAWING

CUSTOMER PART NO.	REV

10

9

8

7

6

5

4

3

BWG NO
20849-025

REV SH
2 OF 2

1

F

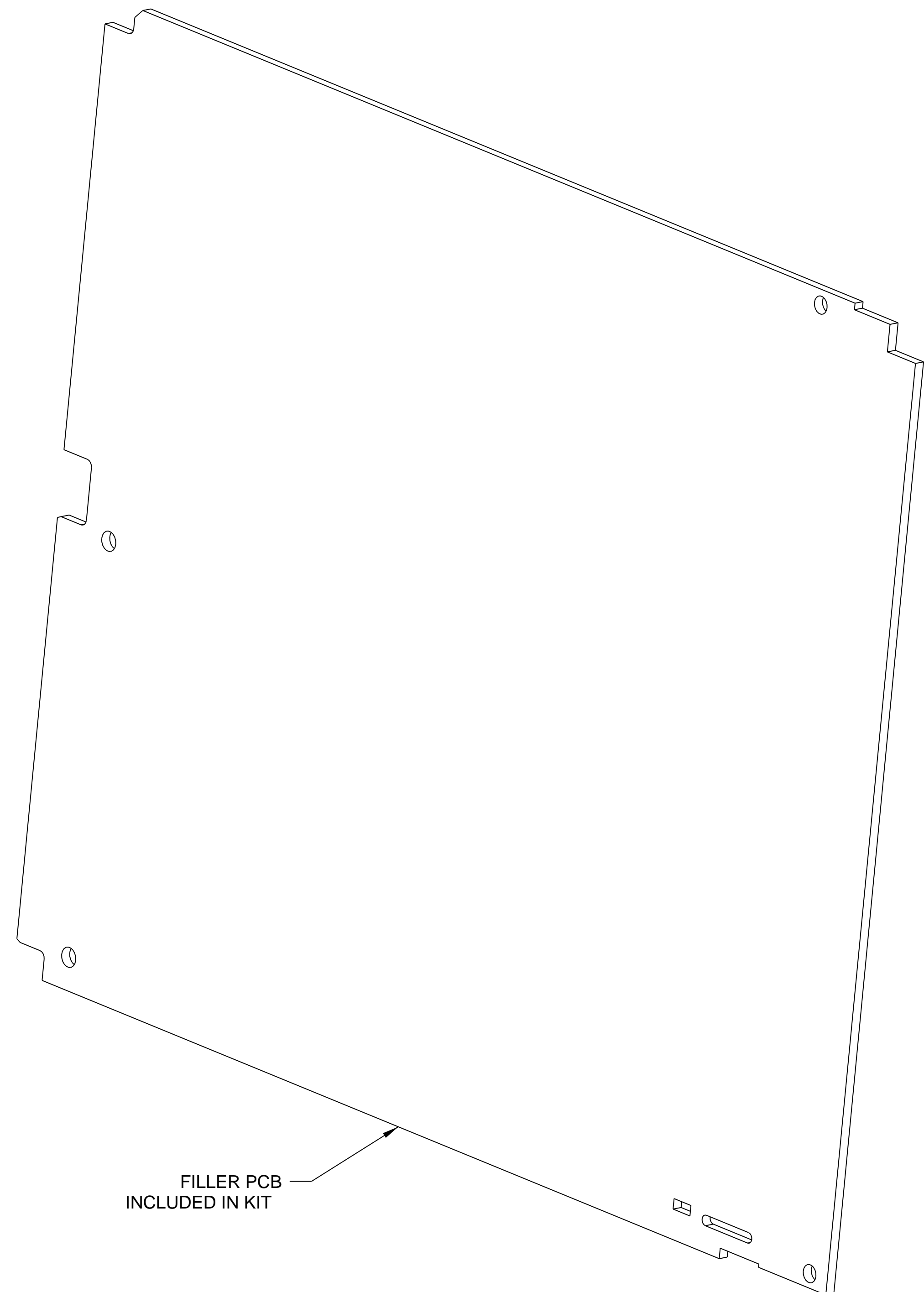
E

D

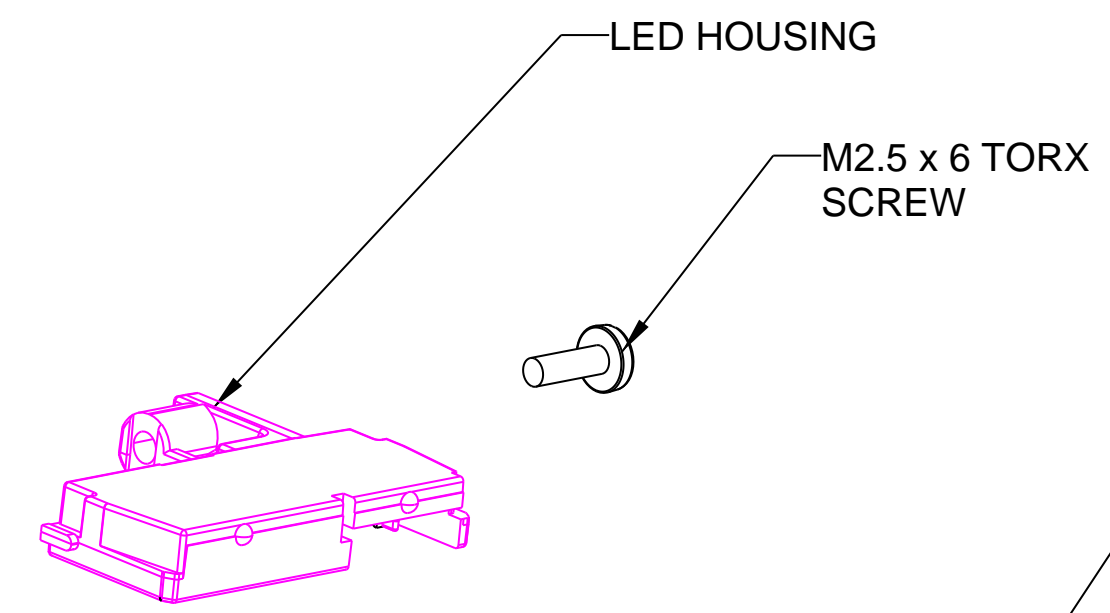
C

B

A

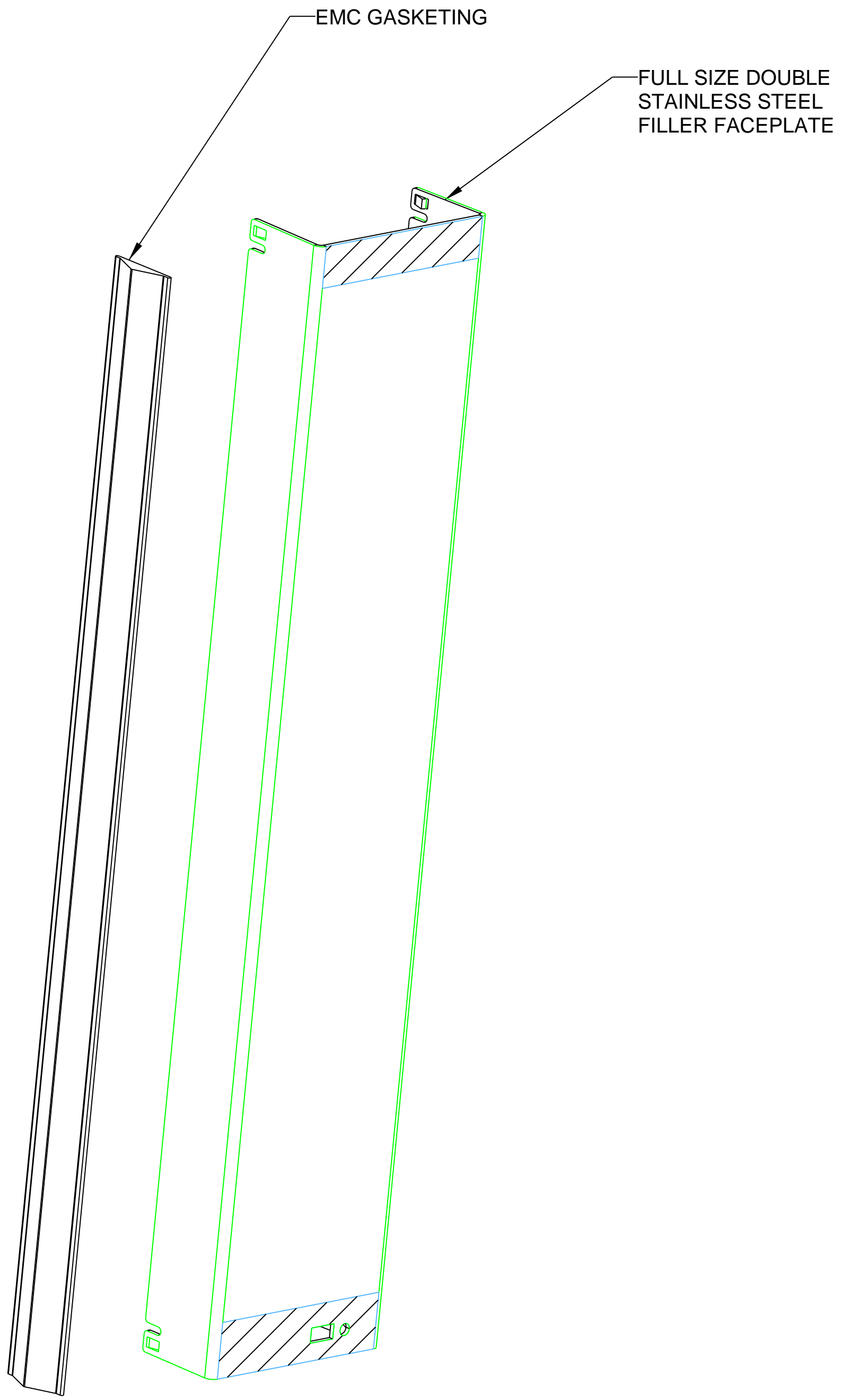


FILLER PCB
INCLUDED IN KIT



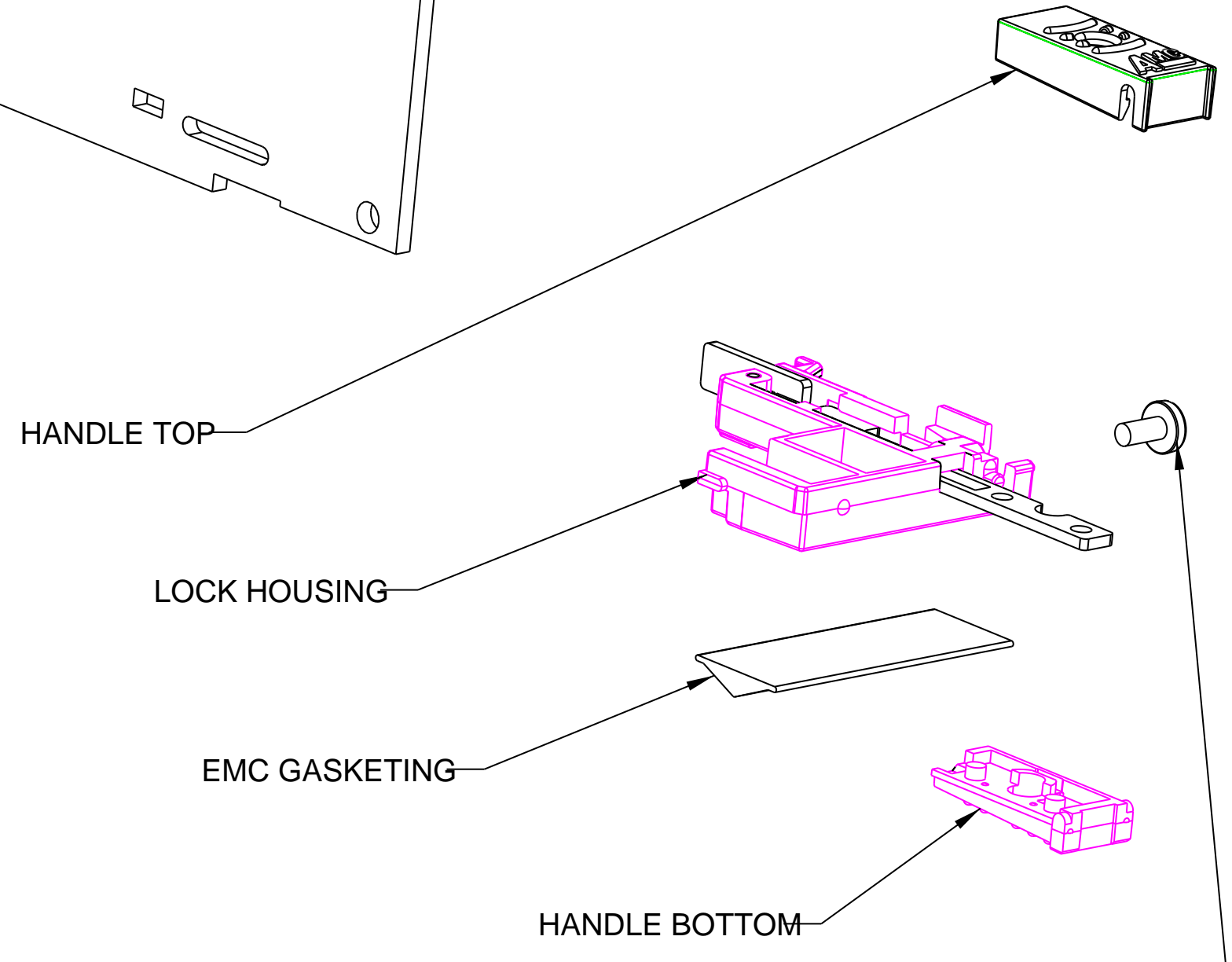
LED HOUSING

M2.5 x 6 TORX
SCREW



EMC GASKETING

FULL SIZE DOUBLE
STAINLESS STEEL
FILLER FACEPLATE



HANDLE TOP

LOCK HOUSING

EMC GASKETING

HANDLE BOTTOM

M2.5 x 4 TORX
SCREWS

Schroff[®]
...A BRAND OF

Pentair
Electronic Packaging

SIZE	CAGE CODE	PART NUMBER	REV
D62559		20849-025	
SCALE 2:000	WEIGHT	SHEET 2 OF 2	

10

9

8

7

6

5

4

3

2

1

PROJ#

JUNE 06

PROJ#